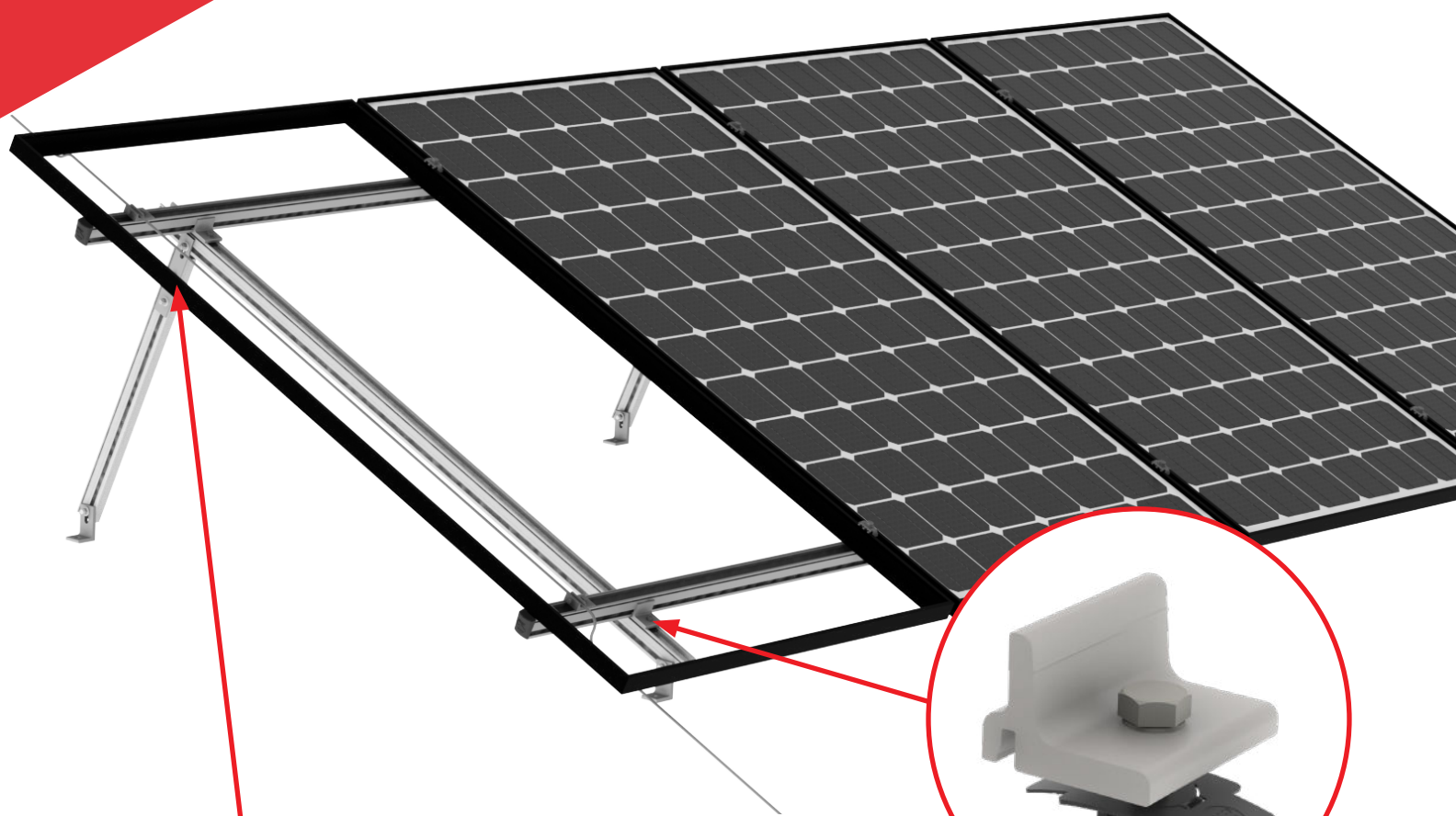


CrossRail Tilt Up System



DATA SHEET



Climber Set

- / Attaches east-west rails to north-south rails
- / Available for 44-X or 48-X/48-XL CrossRails
- / MK4 technology provides highest rail engagement



Tilt Connector Set

- / Connects tilt legs with north-south rails
- / All hardware included

PRODUCT FEATURES



- / High quality, German-engineered system optimized for residential installations
- / MK4 technology provides highest rail engagement
- / L-Foot provides adjustability and compatibility with common roof types
- / 100% code compliant, structural validation for all solar states
- / 4 rail sizes available to suit all structural conditions
- / Fast installation with minimal component count result in low total installed cost
- / Flexible to several tilt angles and pre-engineered for 7, 10 and 15 degree tilts
- / Same rail used as tilt legs; minimize rail waste by using scrap as tilt legs

TECHNICAL DATA

	CrossRail Tilt Up System
Roof Type	Composition shingle, standing seam, trapezoidal, corrugated, flat roofs
Material	High corrosion resistance stainless steel and high grade aluminum
Flexibility	Modular construction, suitable for any system size, height adjustable
PV Modules	For all common module types
Module Orientation	Portrait and landscape
Roof Connection	Drill connection into rafter
Structural Validity	IBC compliant, stamped engineering letters available for all solar states
Warranty	25 years

CrossRail Tilt Up Installation Dimensions



The CrossRail Tilt Up System is a fully customizable solution. Figure 2 and Table 1 below provide recommended installation dimensions based upon a standard 60-cell and 72-cell PV module with 1/6 - point clamping locations. Always ensure that the dimensions are suitable for the project site.

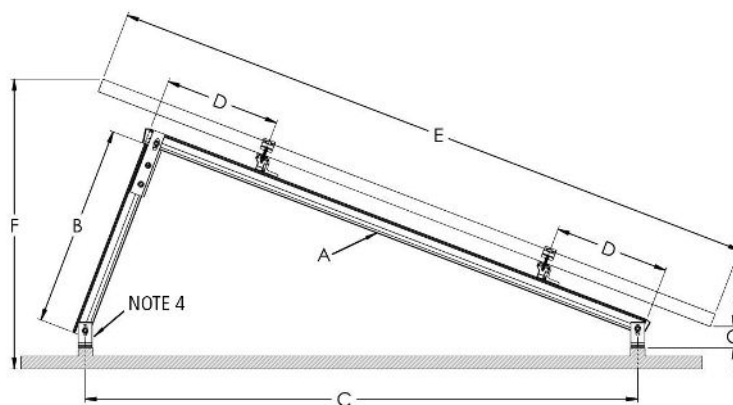


Figure 2: CrossRail Tilt Up Leg Dimensions

Dimension	Description	Desired Tilt Angle								
		15 Degrees			10 Degrees			7 Degrees		
		Portrait		Landscape	Portrait		Landscape	Portrait		Landscape
		60-Cell	72-Cell	60 & 72	60-Cell	72-Cell	60 & 72	60-Cell	72-Cell	60 & 72
A	Front Leg	54.5	62	39	54.5	62	39	54.5	62	39
B	Rear Leg	15	16.5	10	9.5	11	6.75	6.5	7.5	4.75
C	L-Foot Spacing	54	64	40	53	63	39.5	52.5	62.5	39
D	Rail Offset	5	5	5	5	5	5	5	5	5
E	Module Length	65	79	39.5	65	79	39.5	65	79	39.5
F	Rear Module Height	22	25	10	17	18	7	14	15	5
G	Front Module Height	3 1/3	3 1/3	3 1/3	3 7/8	3 7/8	3 7/8	4 1/8	4 1/8	4 1/8

Table 1: CrossRail Tilt Up installation dimensions

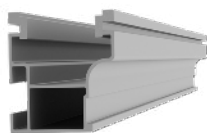
Note: All dimensions are in inches

*Note: / degree tilted systems in landscape require specific configurations.

Important Notes:

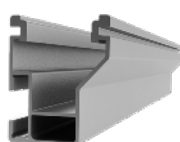
1. Rail Offset not to exceed 8 inches.
2. Rear module height not to exceed 30 inches, Note that dimension provided in Table 1 does not roof attachment height.
3. Front module height dimension does not include roof attachment height.
4. Refer to CrossRail Tilt Up Engineering Letter(s) for reaction loads at L-Feet.
5. Always refer to chosen PV module manufacturer's installation instructions for approved clamping locations. Dimensions in Table 1 assume a standard 60-cell or 72-cell module with clamping locations at the 1/6-points on the module's long edge.
6. Installer is responsible for cutting rail to lengths specified "A" and "B" in Table 1.
7. Dimensions provided in Table 1 are suggested values. Installer shall verify dimensions are appropriate for the individual site conditions, selected PV module and roof surface.
8. Adjust based on your installation needs.

Components



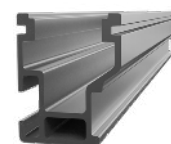
CrossRail 44-X

Part Number	Description
4000019	CrossRail 44-X, 166", Mill
4000020	CrossRail 44-X, 166", Dark
4000021	CrossRail 44-X, 180", Mill
4000022	CrossRail 44-X, 180", Dark



CrossRail 48-X

Part Number	Description
4000662	CrossRail 48-X, 166", Mill
4000663	CrossRail 48-X, 166", Dark



CrossRail 48-XL

Part Number	Description
4000695	CrossRail 48-XL, 166", Mill
4000705	CrossRail 48-XL, 166", Dark



Climber Set

Part Number	Description
4006042-H	CR 48-X/48-XL Climber Set w/Hole, 13mm
4006043	CR 44-X, Climber Set w.Hole



Tilt Connector Set

Part Number	Description
4000505	CrossRail Tilt Connector Set



L-Foot Attachments

Part Number	Description
4000630	L-Foot Slotted Set, Mill
4000631	L-Foot Slotted Set, Dark
4000080	T-Foot X 6" Kit, Mill
4000218	Big Foot 6" w/3" + Chem Link Clip Kit



Standing Seam PowerClamps

Part Number	Description
4000016	Standing Seam PowerClamp, Mini, Set
4000017	Standing Seam PowerClamp, Standard, Set



Trapezoidal Power Clamp, Kit

Part Number	Description
4000308	Trapezoidal PowerClamp, Kit



Corrugated Power Clamp, Kit

Part Number	Description
4000307	Corrugated PowerClamp, Kit



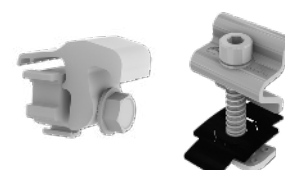
K2 Metal Flashings

Part Number	Description
4000156	K2 Flash Comp Kit, Mill
4000157	K2 Flash Comp Kit, Dark



K2 Mid Clamp

Part Number	Description
4000601-H	CR MC Silver, 30-47mm, 13mm Hex
4000602-H	CR MC Dark, 30-47mm, 13mm Hex
4000688-H	CR MC Silver, 40-50mm, 13mm Hex
4000689-H	CR MC Dark, 40-50mm, 13mm Hex



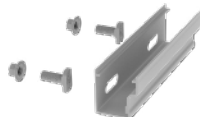
K2 End Clamp

Part Number	Description
4000050-H	Yeti Hidden EC for CR, 13mm Hex Set
4000090	CR EC Silver, 30-40mm
4000091	CR EC Dark, 30-40mm
4000092	CR EC Silver, 40-47mm
4000093	CR EC Dark, 40-47mm



Aluminum End Clamp

Part Number	Description
4005344	CrossRail EC Silver, AL 32-33mm
4005169	CrossRail EC Silver, AL 34-36mm
4005290	CrossRail EC Silver, AL 37-38mm
4005170	CrossRail EC Silver, AL 39-41mm
4005291	CrossRail EC Silver, AL 42-44mm
4005171	CrossRail EC Silver, AL 45-47mm
4005292	CrossRail EC Silver, AL 48mm
4005172	CrossRail EC Silver, AL 49-50mm



CrossRail Rail Connector

Part Number	Description
4000051	Rail Connector CR 44-X, Set, Mill
4000052	Rail Connector CR 44-X, Set, Dark
4000385	RailConn CR48-X,48-XL Struct Set, Mill
4000386	RailConn CR48-X,48-XL Struct Set, Dark
4001196	Rail Connector UL 2703 Set, CR80, Mill



Bonding & Grounding

Part Number	Description
4000629-H	CR Microinverter & Opt, 13mm Hex Kit
4000006-H	Everest Ground Lug, 13mm Hex
4000083	MLPE, Module Frame Mount, Kit



Wire Management

Part Number	Description
4000069	Wire Management Clip, TC
4000382	HEYClip SunRunner Cable Slip SS, S6404
4005394	Wire Mangement Clip, Omega, Black



CR 48-X/48-XL Sleeve

Part Number	Description
4000177	Sleeve CR 44-X
4000583	CrosRail 3" Black Sleeve 48-X, 48-XL

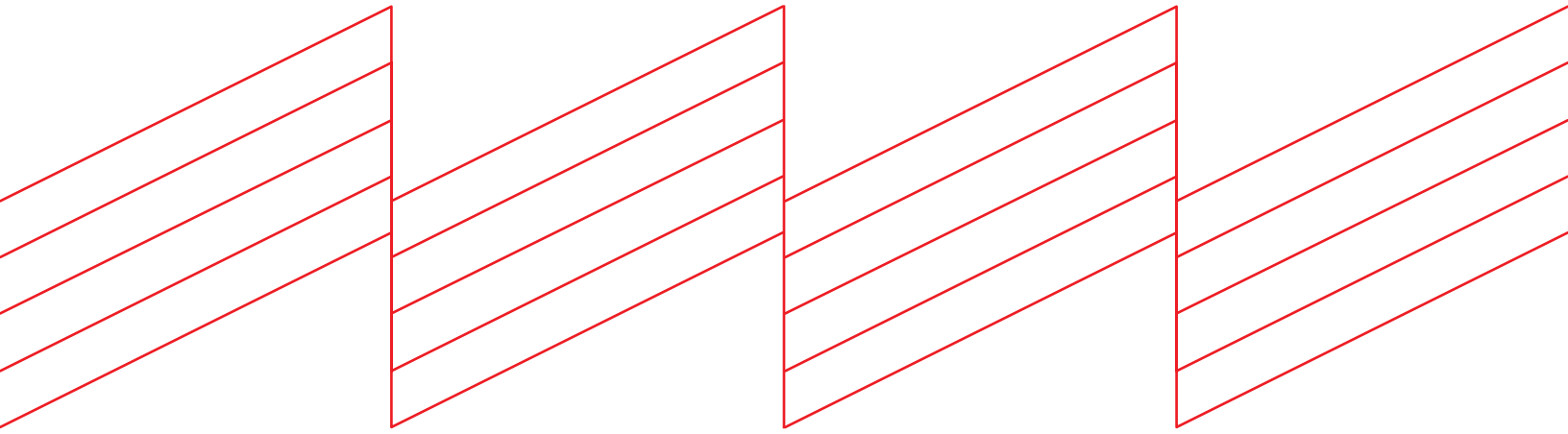


End Caps

Part Number	Description
4000176	EndCap 44-X, K2
4000431	CrossRail Flat EndCap, CR 48-X, 48-XL
4001221	EndCap, Black, CR80



Connecting Strength



K2 Systems, LLC

4665 North Ave. Suite I • Oceanside, CA 92056 •
USA +1.760.301.5300 • info@k2-systems.com
www.k2-systems.com

CrossRail Tilt Up System Data Sheet V1 | 0423 • Subject to change
Product illustrations are exemplary and may differ from the original.